

Sorting Waypoints

Would you like to have your waypoints in one file or sorted by lake or state? The answer is yes if it is easy! I can't count the emails and questions I have received at my seminars on how to sort waypoints. There hasn't been an easy method and it required expensive complicated software but I have finally figured out an easier and cheaper way for you. It has to be easy as most anglers don't want to deal with complicated software. Read on and you will see how simple it is.

I sorted my waypoints by lake many years ago because I travel to many different lakes on the walleye tournament circuits. Before I go to a new lake I save the waypoints on the Lowrance HDS to a memory card from the last lake I visited. I use a date to remember the current waypoint file. If I left Giant Lake, I would save the file and name it GL 211 for February 2011. Instructions on saving waypoints from the HDS are here <http://www.hightechfishing.com/importexport.html>. When you save waypoints you also save the trails by default.

I then delete all the trails and waypoints from the HDS using the Waypoints, Routes, Trails window. You find this by pressing and holding the waypoint/find button. When you are in the trails or waypoint window you press menu and select delete all to clear the waypoints or trails.

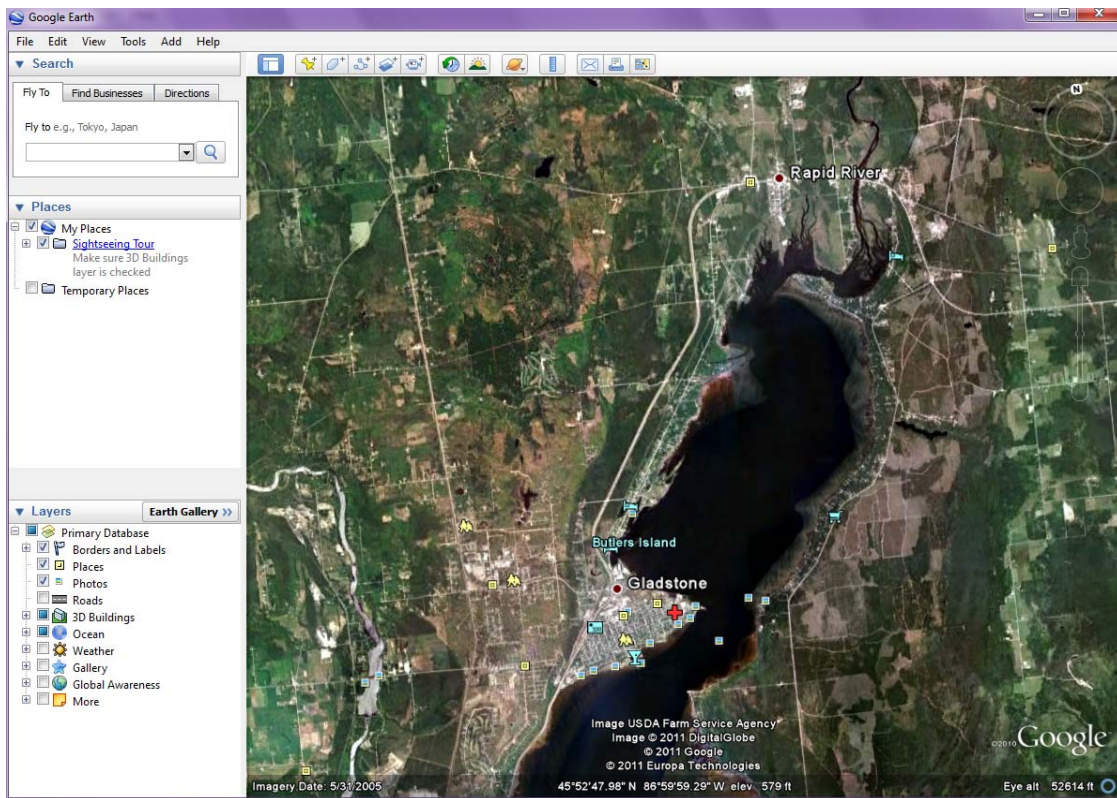
Lastly I import my waypoint file for the new lake, save more waypoints that day or week and save a new file with the lake's name and date.

You will need 2 types of software to sort your waypoints, DrDepth and Google Earth. Google Earth is free. Any of the 3 versions of DrDepth will sort waypoints but that requires purchasing the software.

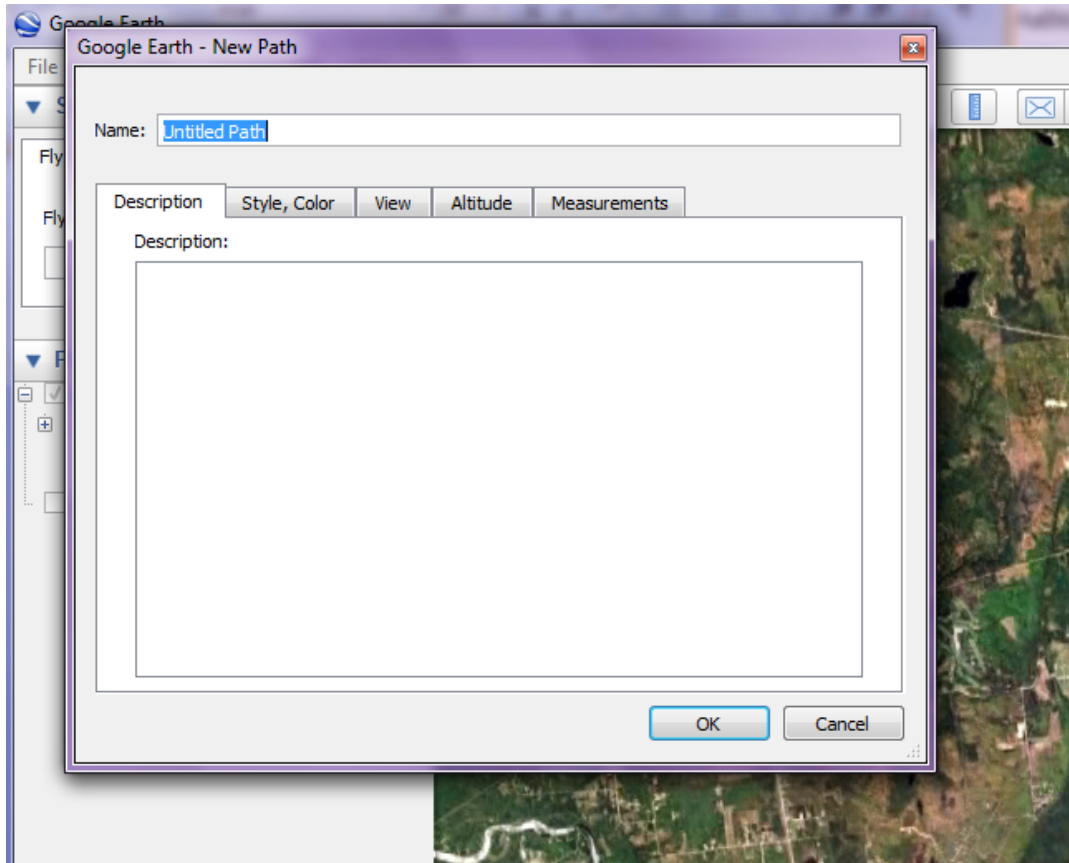
You should do some planning about what you want to accomplish first. If you want to sort by lake, state or an area you need to make a list. In this example I will show you how to sort waypoints for a lake from other lakes.

I am going to make a file with only waypoints from Upper LBDN. First I create a path (just like a trail) around the lakes in Google Earth. You select path from the top toolbar and you get a window with details of the path. You can name the path something you will remember (Upper LBDN).

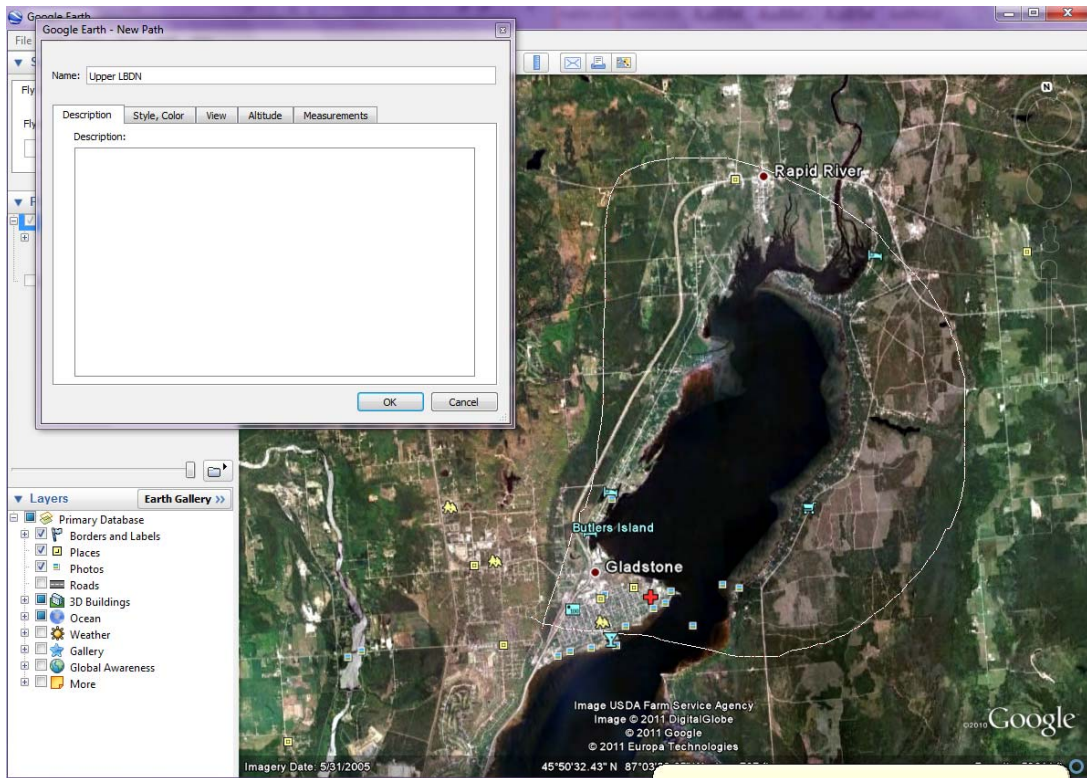
Open Google Earth and zoom in to where your waypoints are located.



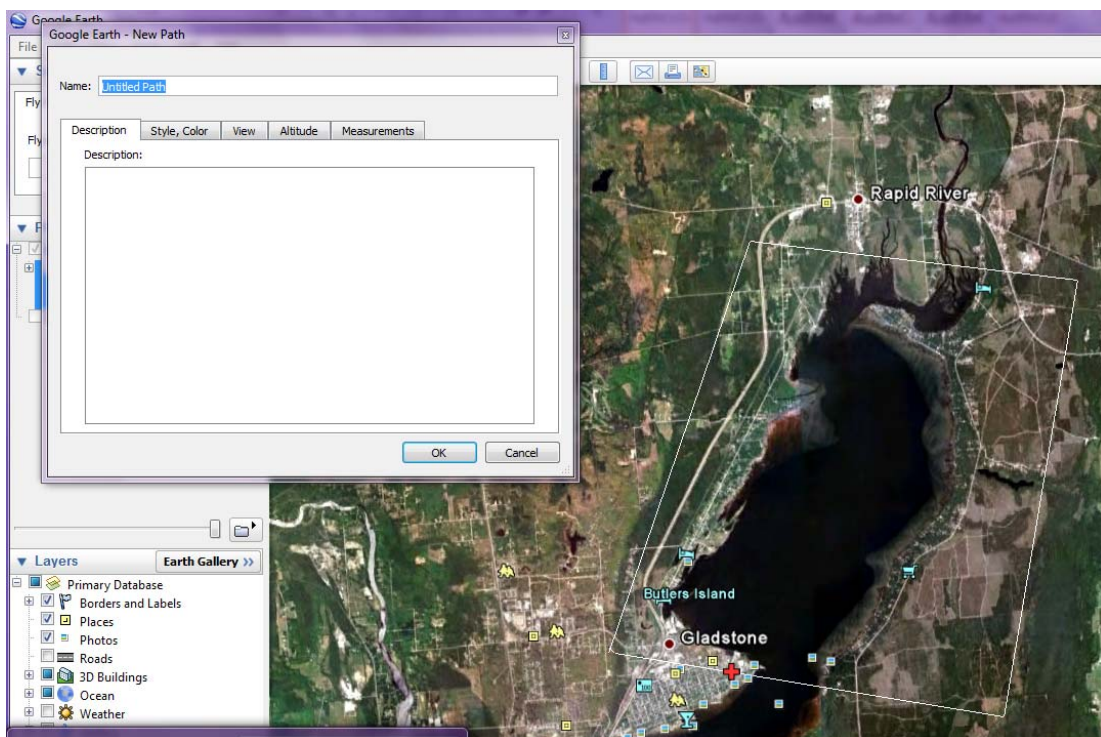
Click on the Path icon on the toolbar above the map. A New Path window pops-up on top of the Google Earth window.



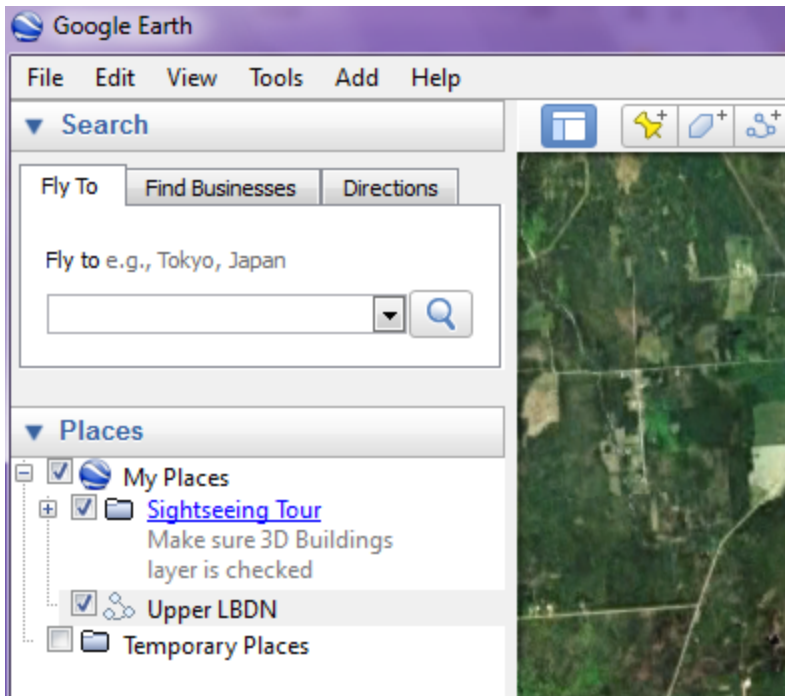
With the New Path window opened, type in a name for the path (boundary) you are going to make. Left click at a starting point on the map and hold down the left mouse button as you draw the boundary. I call this the click and drag method. After drawing the boundary, click OK on the bottom of the New Path window.



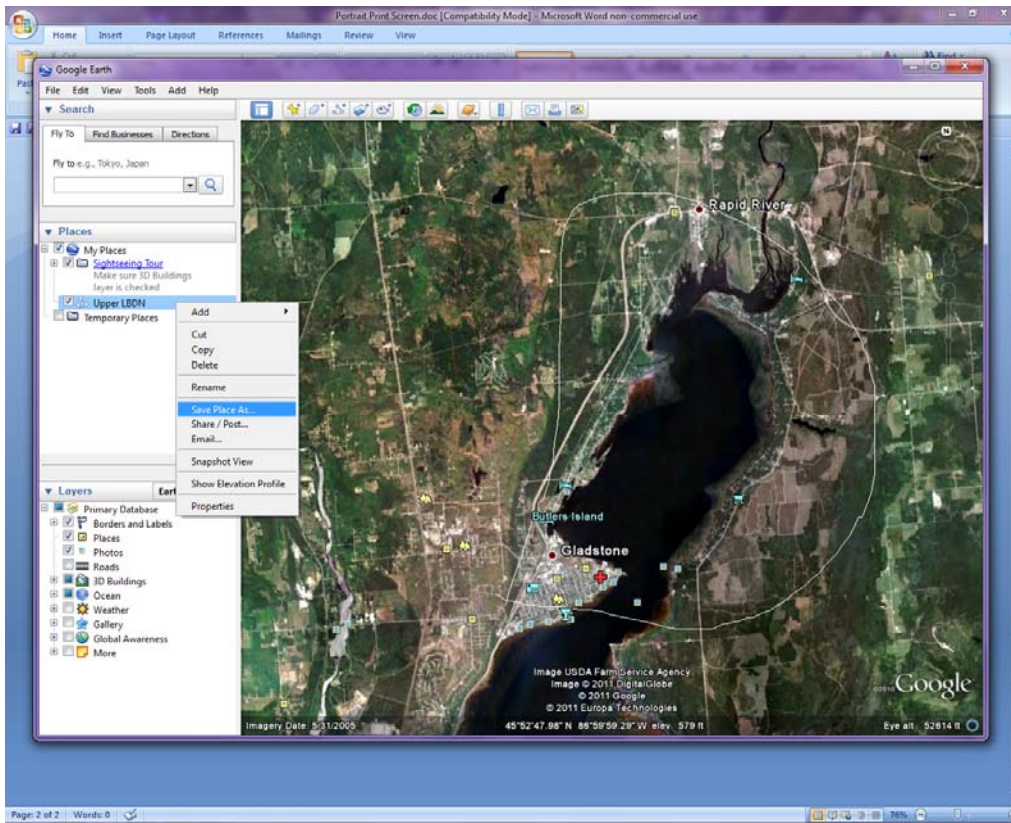
This window will pop-up showing the boundary you made.



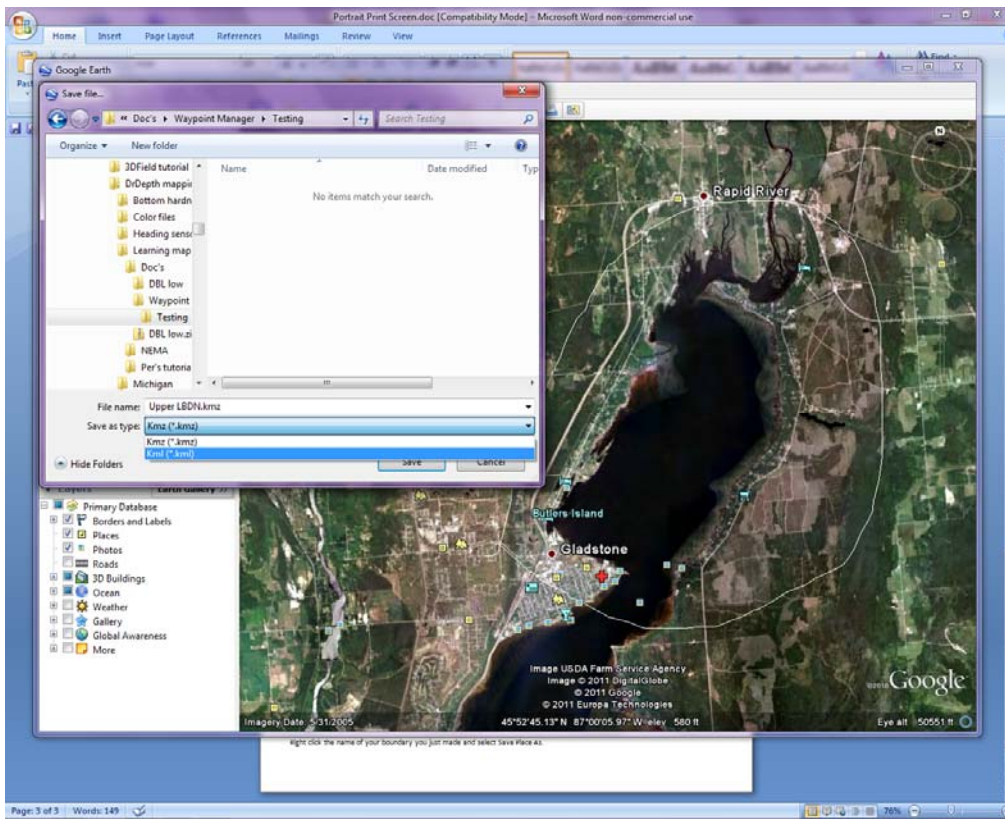
You can also create a path (boundary) by clicking 4 points that will make a boundary.



After you clicked OK, it also places the path name in the My Places folder.



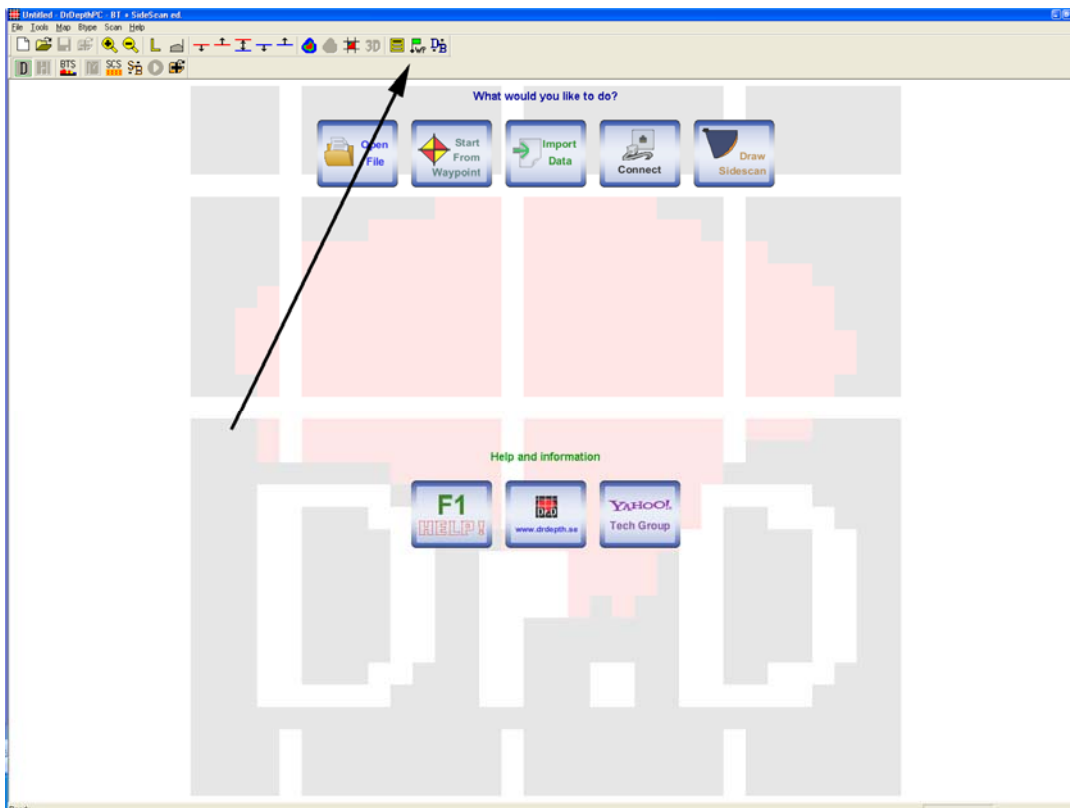
Right click the name of your boundary you just made (Upper LBDN) and click on Save Place As.

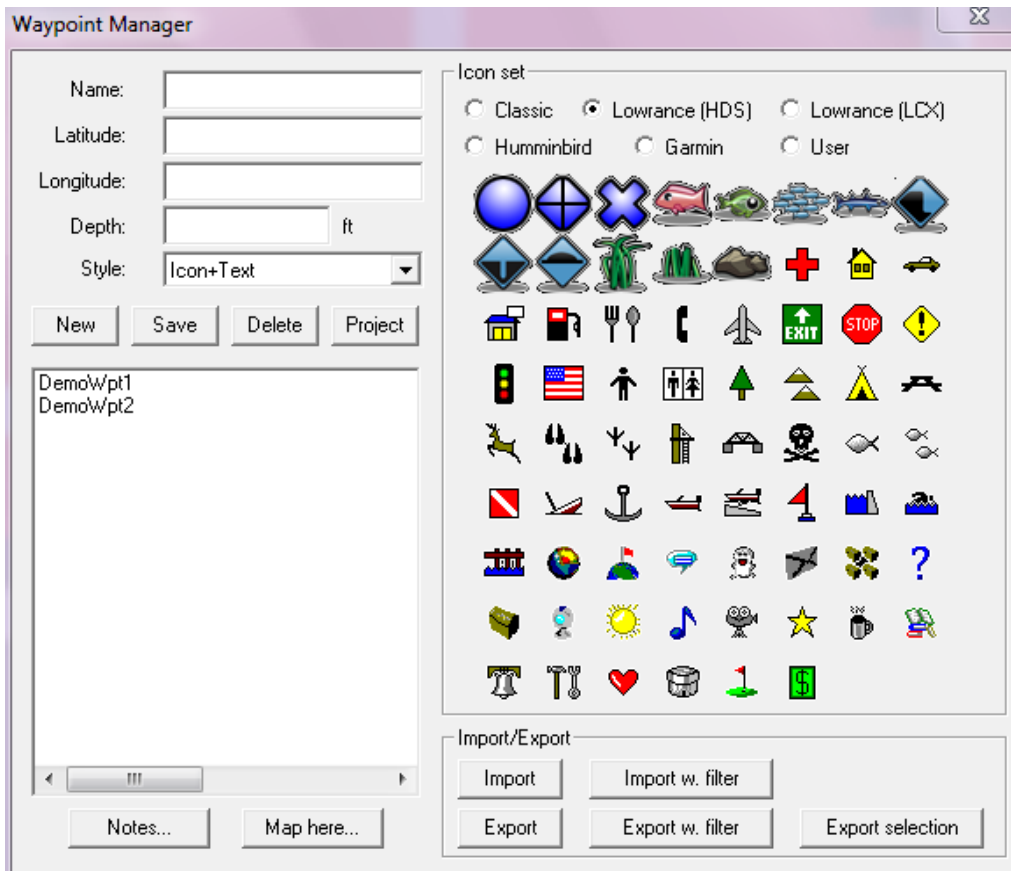


Select a folder you want to put this file in. Then in the Save as type: select KLM (*.kml) and click on Save

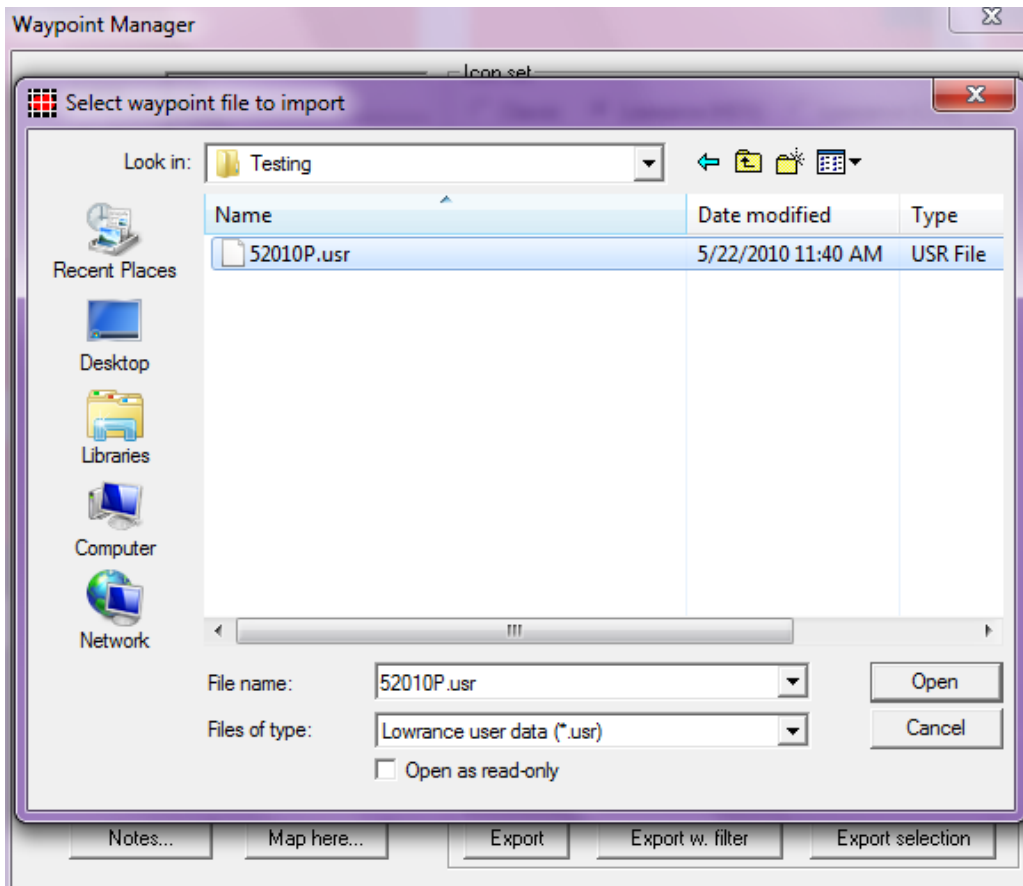
You are now ready to sort waypoints.

Open DrDepth and click on the Green flag in the menu.

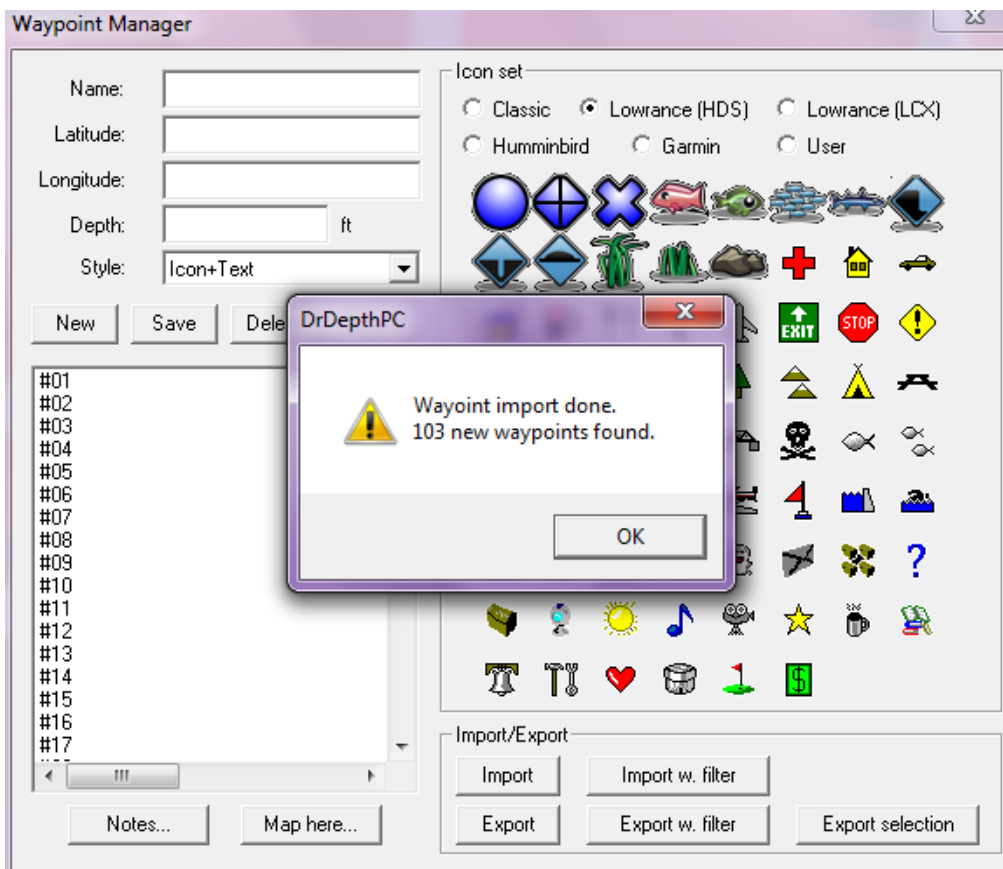




This window pops-up. Select the type of Lowrance unit you use. Click on Import.

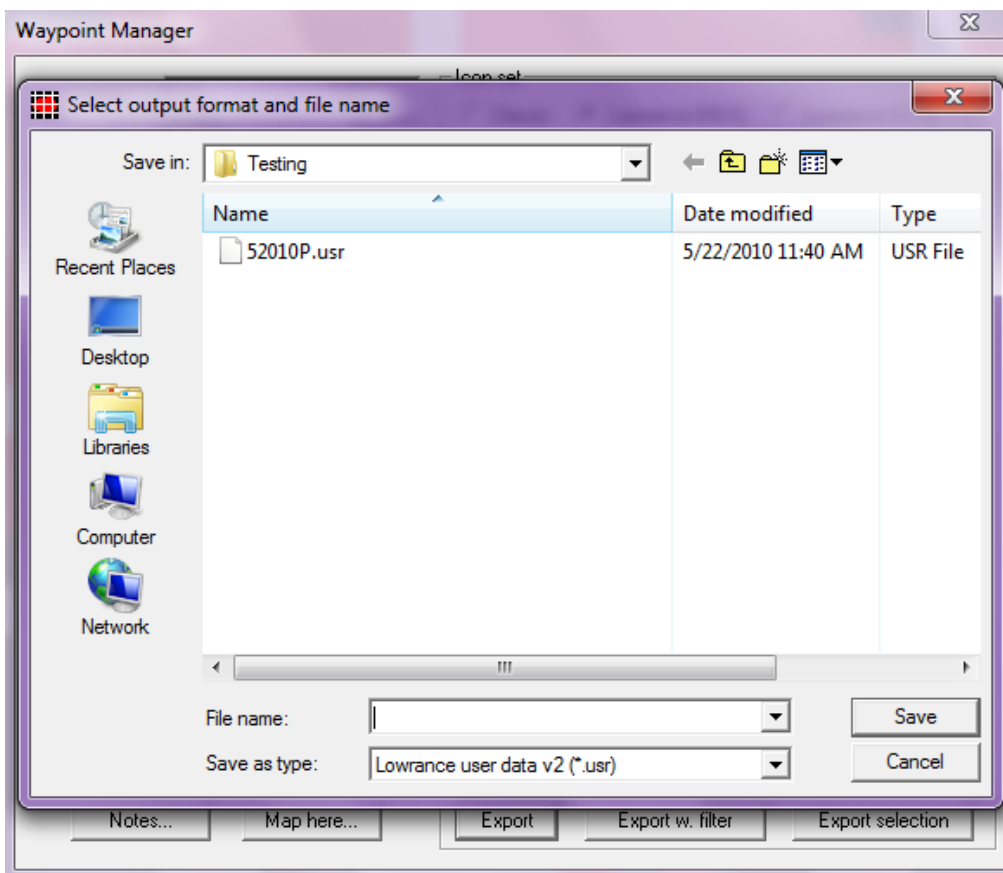


Select the file you want to import and click on Open.

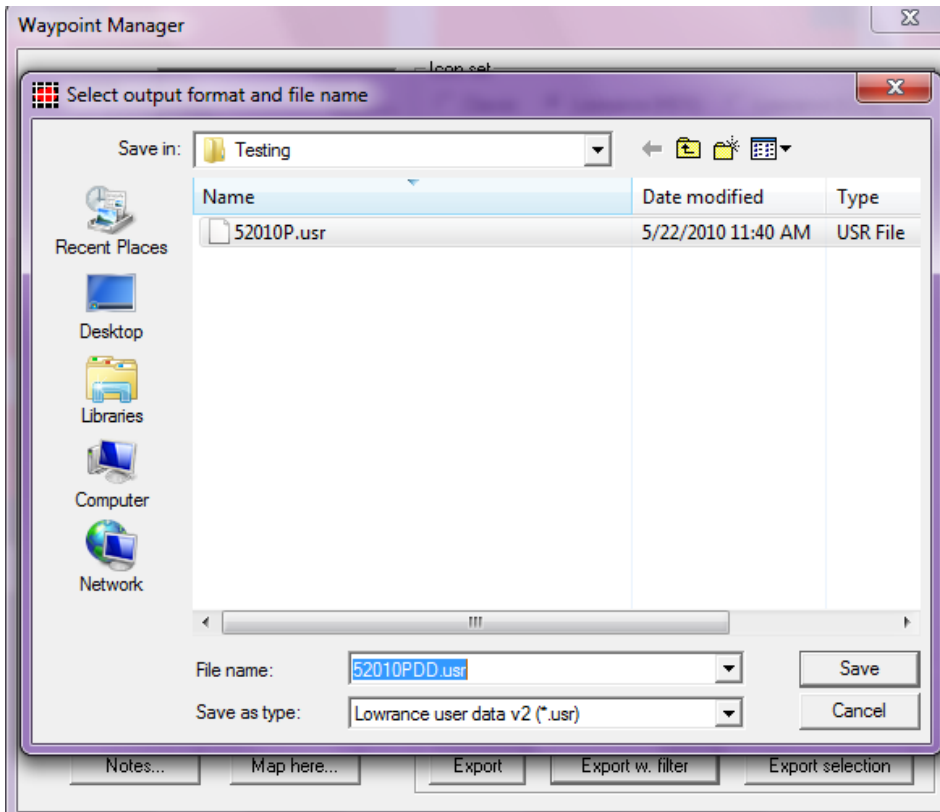


Click OK to close this window. Click on Export w. filter.

Now export them as the file type you want with a filter. The filter is the path (boundary) you created in Google Earth. DrDepth will export only the waypoints inside the boundary.

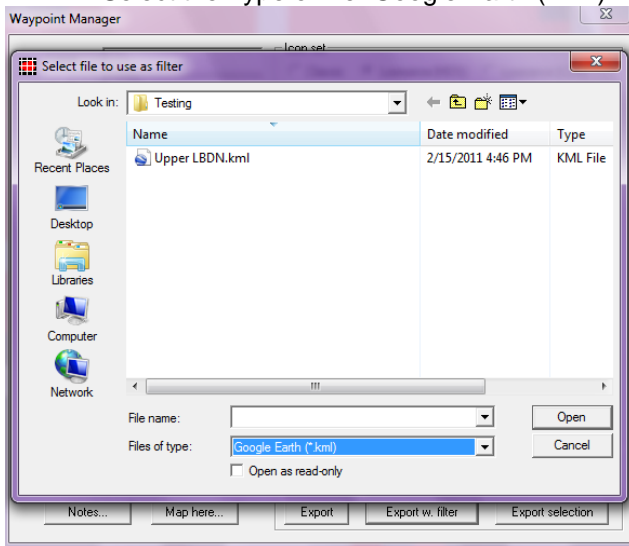


You must select a file name and what format for the waypoints. Lowrance has 3 versions of saving waypoints. Version 2 is the oldest and also works in handheld GPS models. Version3 saves the depth with the waypoint and Version 4 is from the Lowrance HDS. I suggest saving as Version 2 if you have a Lowrance handheld, Version 3 for the LMS/LCX models and Version 4 for the HDS so you can keep the new Lowrance HDS icons (symbols).

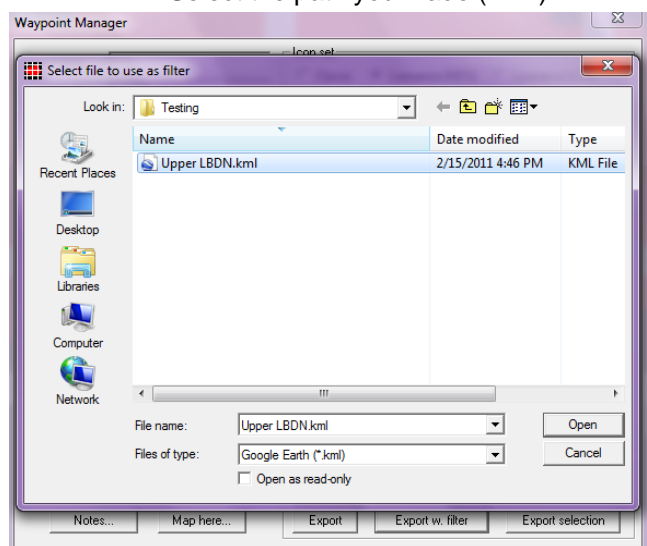


Click Save and the next window will pop-up.

Select the Type of file: Google Earth (*.kml)



Select the path you made (*.kml)



Click on Open and now you have created a waypoint file with only waypoints from Upper LBDN.

All you have to do is create more paths (boundaries) and repeat the process until you are organized.

I personally want to thank Per Pelin at DrDepth for creating this option.

<http://www.hightechfishing.com/drdepth-1.html>